



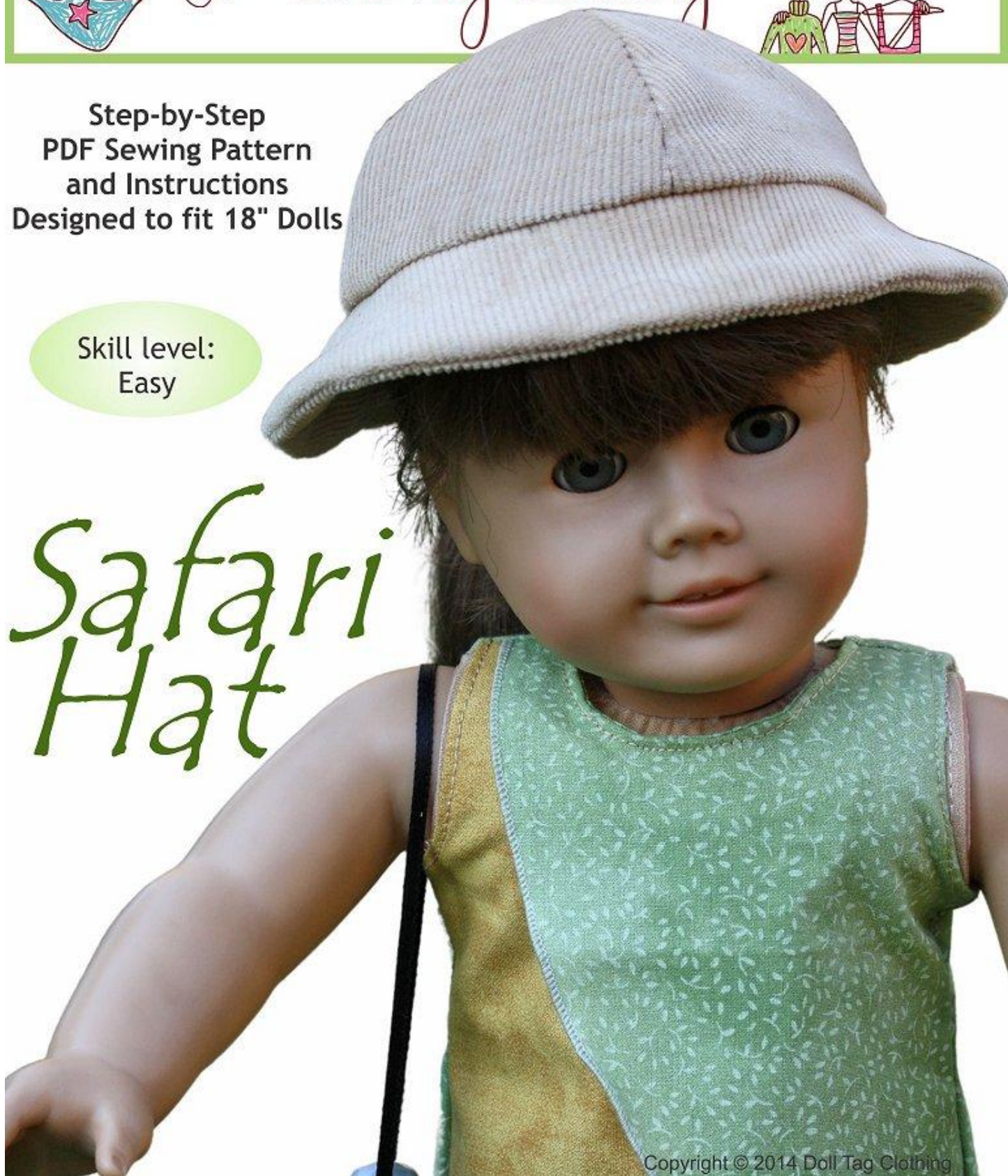
Doll Tag Clothing



Step-by-Step
PDF Sewing Pattern
and Instructions
Designed to fit 18" Dolls

Skill level:
Easy

Safari Hat



Safari Hat



Index

Cover Pages	Page 1 - 2	Sewing Instructions	Page 5 - 8
Pattern Details	Page 3	Pattern Pieces	Page 9
Cutting List & Layout	Page 4	Summary of Instructions	Page 10

Doll Model Size

- This pattern is designed to fit **18 inch dolls**.
- Head circumference is 10 - 12 inch

Fabric Guide

- Light to medium weight woven fabric
- A thin denim or corduroy will give the safari hat effect with a firm shape
- Lining: Light weight woven fabric such as cotton

You will need

- Fabric – 14” x 19”
- Lining – 4” x 9”
- Fusible Interfacing (optional) – 8” x 19”
- Matching Thread

Printing the Pattern

- A PDF reader is required to view and print the files (Recommended Adobe Reader).
- Pattern pieces are at the end of the instructions. They are designed to fit on an 8.5” x 11” standard US paper.
- Check the pattern scale. There is no resizing necessary. Print files at 100%, “Scale None”, or “Actual Size”.
- If you are using A4 Paper set and your scale is not correct, set your printer to print “Letter” size.
- Simply cut out the pattern pieces or trace them onto pattern paper.

Before You Begin

- **Seam allowance** – Sew a 1/4” seam unless otherwise stated.
- **Pressing** – Press between steps for a neat end product.
- **CLIP and NOTCH the Curves** – Internal curves are clipped and external curves are notched at regular intervals. This allows for a flat curve when the seam is turned.
- Working with thicker fabrics like corduroy or denim, use stitch length – 3.

Cutting List & Layout

INTERFACING –

Firm fabric such as corduroy and denim does not need fusible interfacing. For thinner fabrics such as cotton it is best to iron interfacing to the wrong side of your hat panels.

Fabric & Lining

- 4x Hat Top – Fabric & Lining
- 2x Hat Brim – Fabric

Fusible Interfacing (optional)

- 4x Hat Top
- 1x Hat Brim



Fabric

Lining

Fusible Interfacing (optional)

Sewing Instructions

1. With right sides together, sew the side seam of hat sections together.

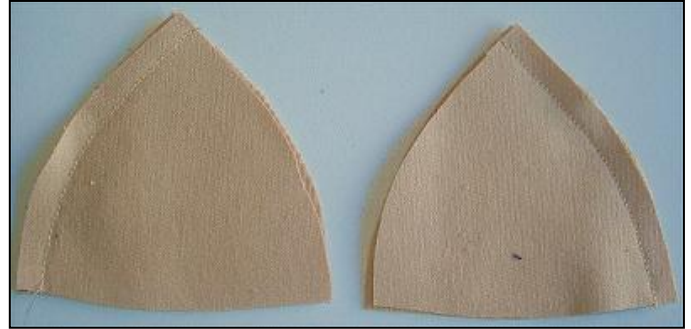
Repeat for the second set.

2. Fold the seam allowances open.

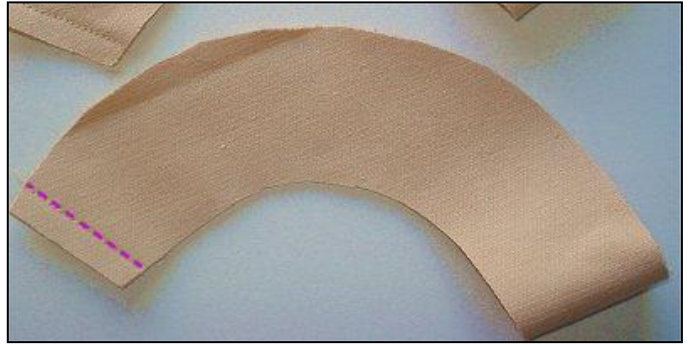
3. Stitch the two sections together so that all four sections are now sewn together to form the dome of the hat.

4. Repeat steps 1 to 3 for the hat top lining.

TIP: To keep the seams open you can press them. Roll a towel or use a ham and place the dome over it to press.



5. With right sides together sew the side seam of the brim.
6. Do the same for the brim facing (Bottom part of the brim).



7. With right sides together, sew the brim to the brim facing on the outside edge.



8. Notch the seam allowance in a few places all around the outside edge of the brim. This will make for a neater finish when we turn the brim. Be careful not to cut through the stitching.
9. Turn the brim right side out and press.



Optional: Stitch 1/8" from the brim edge creating a top stitch.



10. With right sides together, pin and sew the hat dome onto the hat brim.



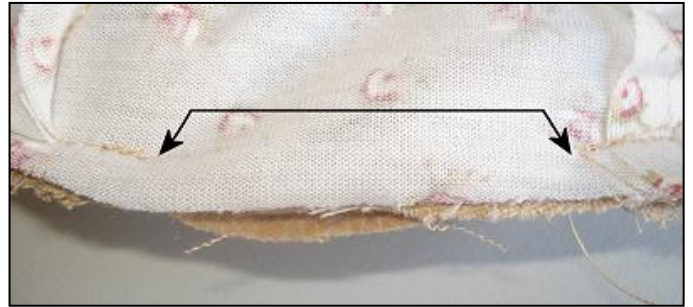
11. Fold the hat right side out. Fold the brim into the dome of the hat.



12. With right sides together, pin the hat lining into the hat. Match up the four seams.



13. Sew the seam. Leave a 2 inch opening to turn the hat.



14. Turn the hat right side out through the opening. Neatly fold closed the gap and pin.



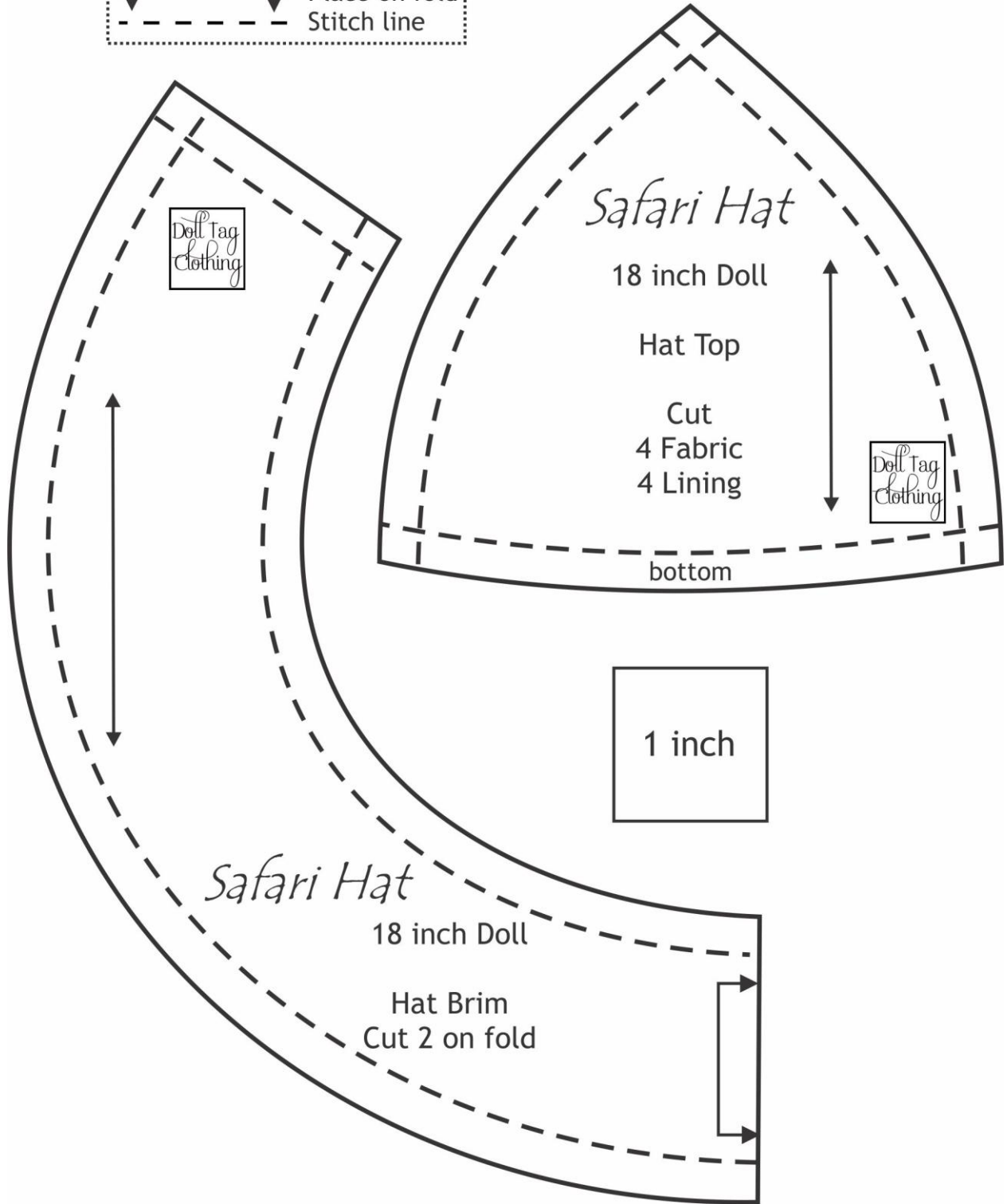
15. Stitch around the seam edge where the dome and brim come together creating a top stitch. This will also close the gap that you have neatly pinned closed.

Your hat is now complete and ready to be added to your doll's wardrobe!



Pattern Symbols

- ↔ Grainline
- ↕ Place on fold
- - - - - Stitch line



SUMMARY OF INSTRUCTIONS

Safari Hat — 18 inch Dolls

1. With right sides together, sew the side seam of hat sections together.
Repeat for the second set.
2. Fold the seam allowances open.
3. Stitch the two sections together so that all four sections are now sewn together to form the dome of the hat.
4. Repeat steps 1 to 3 for the hat top lining.
TIP: To keep the seams open you can press them. Roll a towel or use a ham and place the dome over it to press.
5. With right sides together sew the side seam of the brim.
6. Do the same for the brim facing (Bottom part of the brim).
7. With right sides together, sew the brim to the brim facing on the outside edge.
8. Notch the seam allowance in a few places all around the outside edge of the brim. This will make for a neater finish when we turn the brim. Be careful not to cut through the stitching.
9. Turn the brim right side out and press.
Optional: Stitch 1/8" from the brim edge creating a top stitch.
10. With right sides together, pin and sew the hat dome onto the hat brim.
11. Fold the hat right side out. Fold the brim into the dome of the hat.
12. With right sides together, pin the hat lining into the hat. Match up the four seams.
13. Sew the seam. Leave a 2 inch opening to turn the hat.
14. Turn the hat right side out through the opening. Neatly fold closed the gap and pin.
15. Stitch around the seam edge where the dome and brim come together creating a top stitch. This will also close the gap that you have neatly pinned closed.

Your hat is now complete and ready to be added to your doll's wardrobe!

Over 200 patterns in my catalogue



with



www.dolltagclothing.com

Welcome to my Doll World!



Dollplaysa.com
South African Girl Doll



Facebook.com/DollTagClothing



Dolltagclothing1@gmail.com



Instagram.com/dollplaysa/



Pinterest.com/Liese_Brouwer



Ravelry.com/designers/liese-brouwer

About file sharing - You have purchased 1 copy of this digital product from Doll Tag Clothing for your personal use. You do not have permission to copy, share or sell this pattern or parts thereof. You do not have permission to give it to someone else in any form. Selling or giving this pattern away or parts thereof violates our copyright and is wrong. Copyright © 2024 Doll Tag Clothing - All rights reserved

Disclaimer - These patterns are intended for personal use, not for large scale commercial purposes or manufacturing. When using this pattern to create an item for sale, it will be appreciated if you could give credit in your listing to Doll Tag Clothing.

Doll Tag Clothing is not affiliated with American Girl® Dolls. No endorsement is implied.