



# Tutorial

## Gingerbread Dress



# Index

Cover Page	Page 1
Pattern Information	Page 2
Cutting Instructions	Page 2 - 3
Sewing Instructions	Page 3 - 4

## About this Tutorial

This is a variation of the Dirndl pattern by Doll Tag Clothing to sew a Gingerbread Girl Dress. No pattern pieces are included.

To use these instructions you will need to purchase the Dirndl pattern OR use your favorite dress pattern!

## Doll Models

The models in this pattern are soft body 18 inch dolls. American Girl® Doll and South African Girl Doll©.



## You will need

- Fabric – 7.5 x 43”
- Tulle – 2x (50” x 2”)
- Narrow Ric-Rac (3/8” wide) – White – 56”
- 1/4” or Candy Shape Buttons – x4
- Hook-and-Loop Tape - 3.5” (5/8” width - cut in half to get about 1/4” wide)

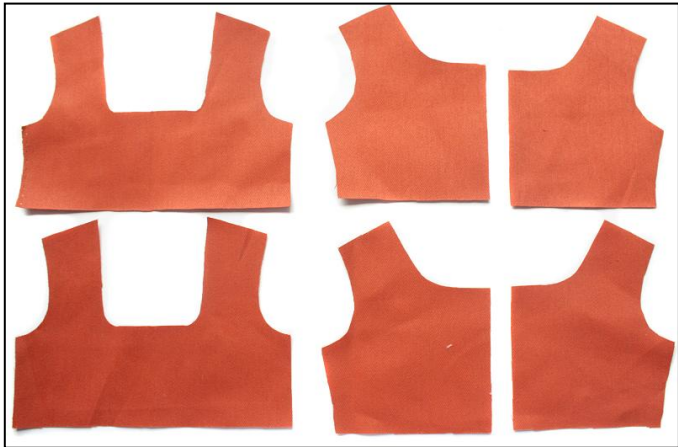
## Cutting Instructions

You will need the following pattern pieces from the dress:

### Cut the bodice

Bodice Front (Button Front Lining) – Cut 2 on fold  
1 fabric & 1 lining

Bodice Back – Cut 4 – 2 fabric & 2 lining

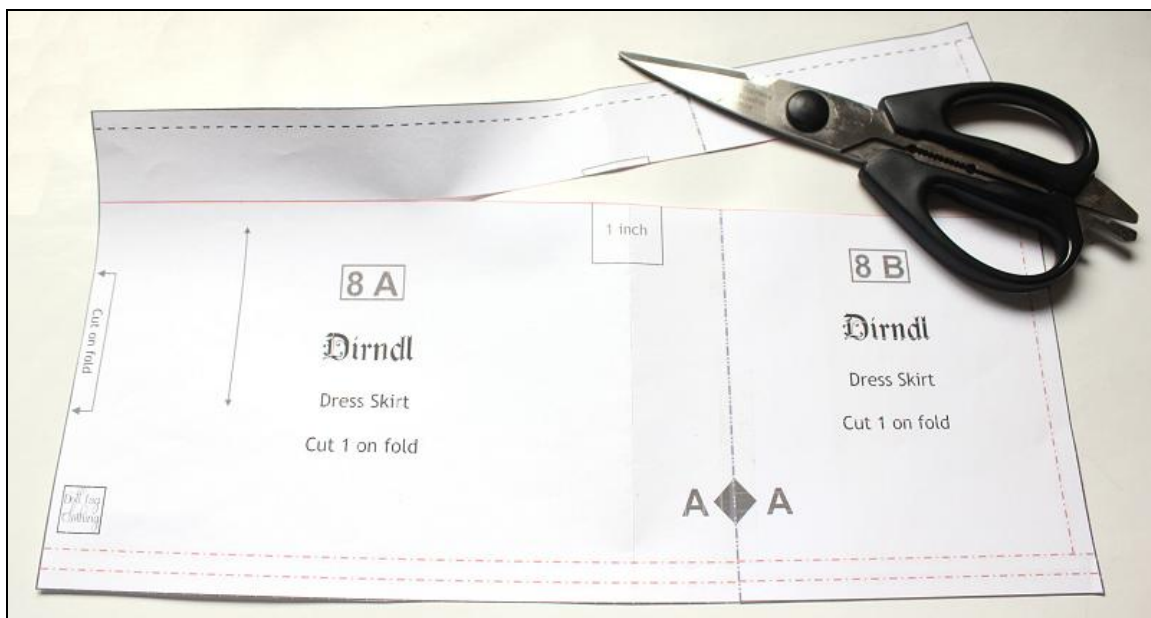


## Cut the skirt

Dress Skirt

Tulle - 2 Strips each 2" x 50"

- From the top of the skirt panel, measure down 1 & 3/8" and draw a line.
- Cut on this line to shorten the skirt pattern.
- Cut skirt on fold from fabric.

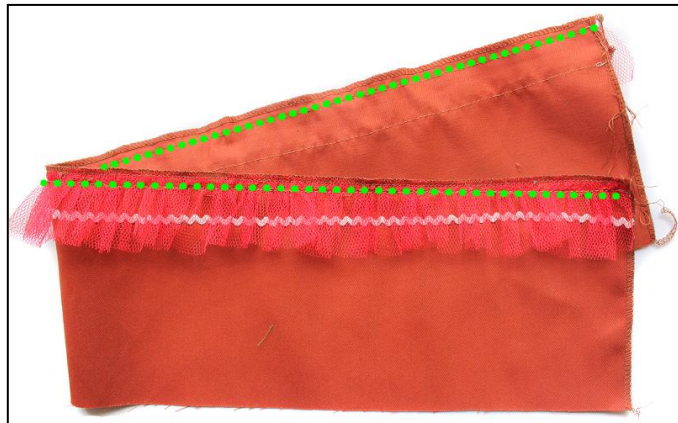
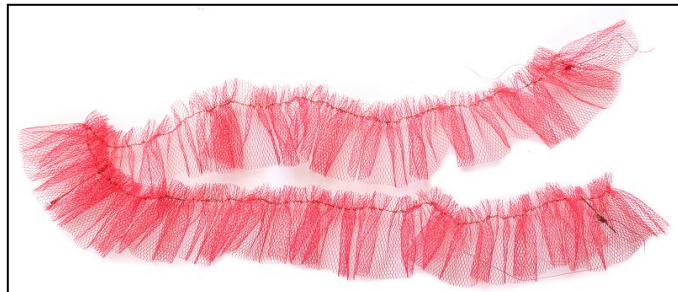


## DRESS Instructions

1. Follow your pattern directions to complete the bodice. (Steps 1 to 9 of the Dirndl pattern)
2. Sew ric-rac around the neck edge of the bodice.
3. Optional: Measure 1/2" from the waist up and draw a line. Sew ric-rac onto this line.



4. Sew the two long pieces of tulle together at one of the short sides to you have a long 100" piece.
5. Sew a row of gather stitches along the one long edge of the tulle. Gather till it is the same length as the bottom of the skirt panel.
- **Gather Stitch** — This is a straight stitch on your sewing machine set to the longest length it can be set to. The bottom (bobbin) thread is pulled to draw in the gathers.
6. Measure 1 inch from the bottom edge of the skirt and draw a line. Sew ric-rac on this line.
7. Finish the two short edges of the skirt off using a serger or zigzag stitch.
8. Align the gathered edge of the tulle to the bottom edge of the skirt. The tulle must be on the right side of the fabric. Sew and finish the seam.
9. Fold the seam up towards the skirt and sew a stitch about 1/8" from the seam edge.
10. Follow your pattern directions to complete the dress (Steps 12 to 19 of the Dirndl pattern)



## Complete the look

**Blouse** - Made with festive fabric using the Dirndl pattern blouse.

**Tights** - Made using the Simply Tights pattern.

**Hat** - From the Santa Claus pattern.



## Over 200 patterns in my catalogue!



with



[www.dolltagclothing.com](http://www.dolltagclothing.com)

**Welcome to my Doll World!**



[Dollplaysa.com](http://Dollplaysa.com)  
South African Girl Doll



[Facebook.com/DollTagClothing](https://Facebook.com/DollTagClothing)



[Dolltagclothing1@gmail.com](mailto:Dolltagclothing1@gmail.com)



[Instagram.com/dollplaysa/](https://Instagram.com/dollplaysa/)



[Pinterest.com/Liese\\_Brouwer](https://Pinterest.com/Liese_Brouwer)



[Ravelry.com/designers/liese-brouwer](https://Ravelry.com/designers/liese-brouwer)

**About file sharing** - You have purchased 1 copy of this digital product from Doll Tag Clothing for your personal use. You do not have permission to copy, share or sell this pattern or parts thereof. You do not have permission to give it to someone else in any form. Selling or giving this pattern away or parts thereof violates our copyright and is wrong. Copyright © 2023 Doll Tag Clothing - All rights reserved

**Disclaimer** - These patterns are intended for personal use, not for large scale commercial purposes or manufacturing. When using this pattern to create an item for sale, it will be appreciated if you could give credit in your listing to Doll Tag Clothing.

Doll Tag Clothing is not affiliated with American Girl® Dolls. No endorsement is implied.