

DTC PATTERN STUDIO

AGE 5 - 11



PDF
Sewing
Pattern &
Instructions

Chef Hat

Index

Cover Page	Page 1	Cutting Instructions	Page 2 - 3
Pattern Information	Page 2	Hat Sewing Instructions	Page 3 - 5

Child Size

Designed to fit 5 to 11 year olds
Head circumference - 20 to 21 inches

Fabric Guide

- Pattern is designed for medium weight woven fabrics such as cotton twill.
- Toque or Chef Hat is traditionally white but can be made in other colors.

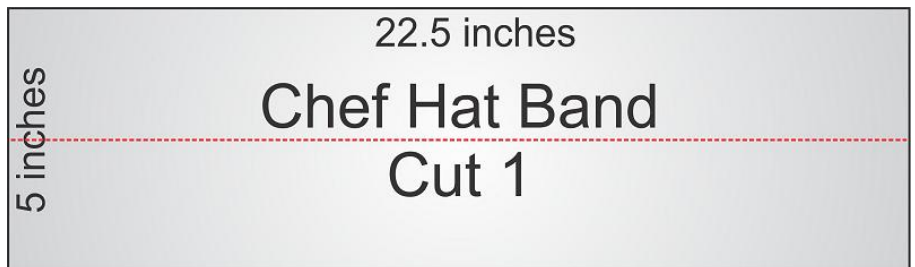
You will need

- Fabric – 20” x 27”
 - Matching Thread
 - Iron and ironing board
-

Cutting Instructions

There are no pattern pieces in this tutorial.
Follow the layout below to cut the 2 pieces you need.

- 1x Hat Band - 5” x 22.5”
- 1x Hat Top - 10” Radius Circle

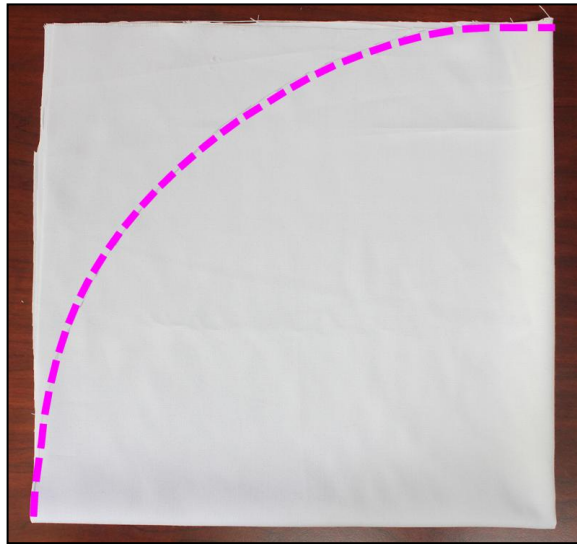
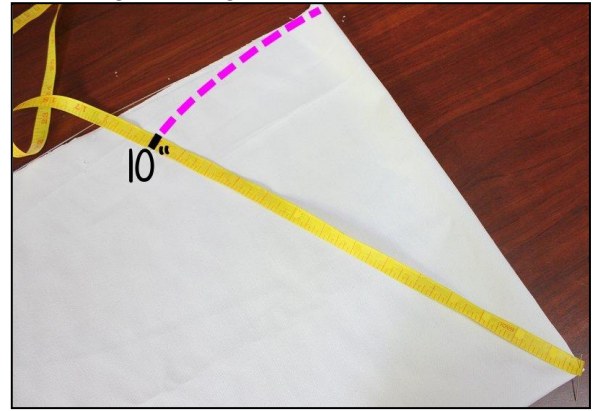


Cutting the Hat Top

- Cut a fabric square of 20” x 20”.
- Fold the square in quarters.
- Pin your measuring tape on the folded corner.
- Measure 10” from the center out and mark.



- Move the tape in a circular motion keeping the pin in place and continue to mark the 10" position till you have an arc drawn.
- Cut on this line for your Hat Top piece.



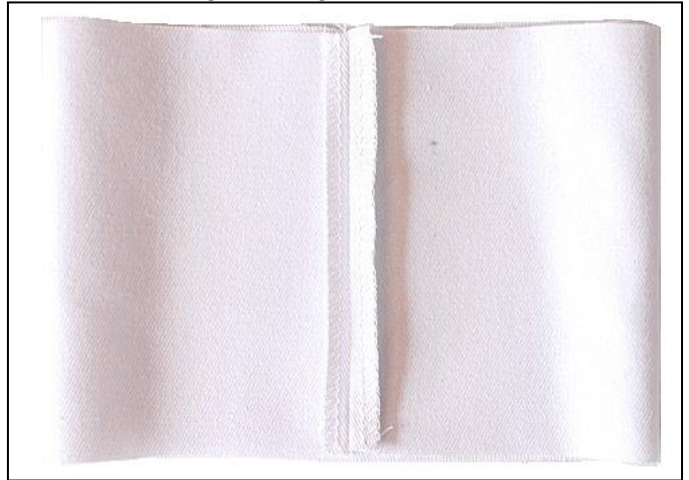
Hat Sewing Instructions

- Sew a 1/2" seam unless otherwise stated.
- Note: "Finish off the seam" - This is to prevent fraying. If you do not have a serger then use a zigzag stitch on your machine. Fray check can also be used. A nice zigzag to use on your machine: Set stitch length 3 and stitch width 3.
- "Finish off the seam" for 2 layers: *Trim* the seam slightly and zigzag OR serge.

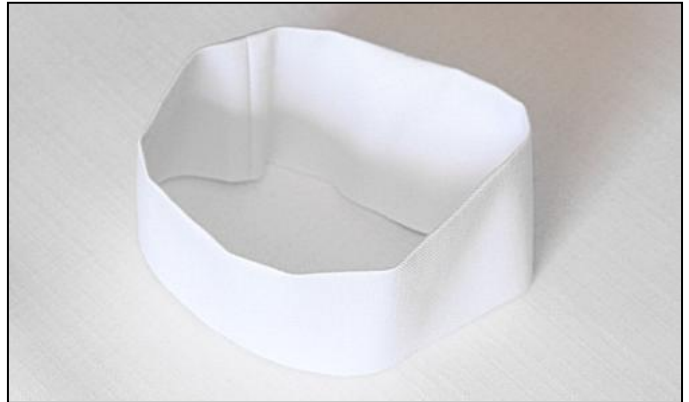
1. Finish off the short ends of the hat band.



2. With right sides together, place the 2 short ends of the hat band together. Sew.
3. Press the seam allowance open.



4. Fold the band in half lengthways. Fold it on the center line with WRONG sides facing one another. Press.



5. Sew 2 rows of gather stitches, 1/4" apart, around the edge of the hat top.

Note: Gather stitch is a straight stitch set on the longest stitch length.



6. Gather the hat top till it measures the same length as the band.



7. Keep the hat top right side out. With right sides together, place the hat top into the hat band. Align the rough edges with one another and pin.
8. Sew and finish the seam allowance.

The Chef Hat is complete!



Over 200 patterns in my catalogue!



DTC PATTERN STUDIO
Doll Tag Clothing
 with
www.dolltagclothing.com

Welcome to my Pattern World!

- 
Dolltagclothing1@gmail.com
- 
Facebook.com/DollTagClothing
- 
Pinterest.com/Liese_Brouwer
- 
Instagram.com/dolltagclothing/
- 
Ravelry.com/designers/liese-brouwer

About file sharing - You have purchased 1 copy of this digital product from Doll Tag Clothing & DTC Pattern Studio for your personal use. You do NOT have permission to copy, share or sell this pattern or parts thereof. You do not have permission to give it to someone else in any form. Selling or giving this pattern away or parts thereof violates our copyright and is wrong. Copyright © 2024 DTC Pattern Studio - All rights reserved

Disclaimer - These patterns are intended for personal use, not for large scale commercial purposes or manufacturing. You may use this pattern to make items for sale.