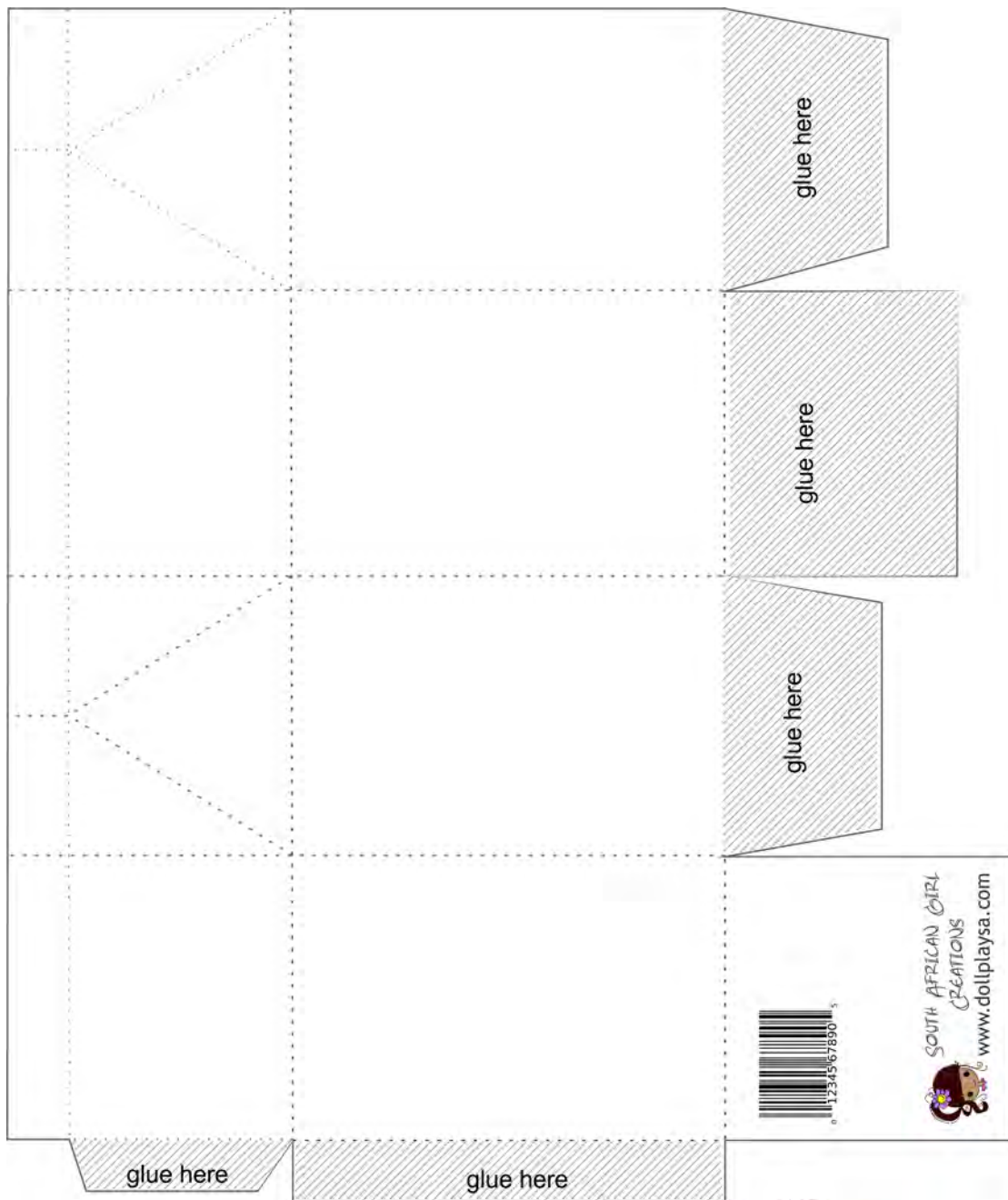


18" Doll Milk Carton

- \* print onto cardboard (cardstock)
- \* cut out on the solid lines
- \* fold on the dashed lines
- \* put glue on all the shaded areas
- \* fold and glue tabs to the inside of the box

\* More instructions and projects from [www.dollplaysa.com](http://www.dollplaysa.com)





### 18" Doll Milk Carton

- \* print onto cardboard (cardstock)
- \* color and decorate your milk carton
- \* cut out on the solid lines
- \* fold on the dashed lines
- \* put glue on all the shaded areas
- \* fold and glue tabs to the inside of the box



\* More instructions and projects from [www.dollplaysa.com](http://www.dollplaysa.com)