

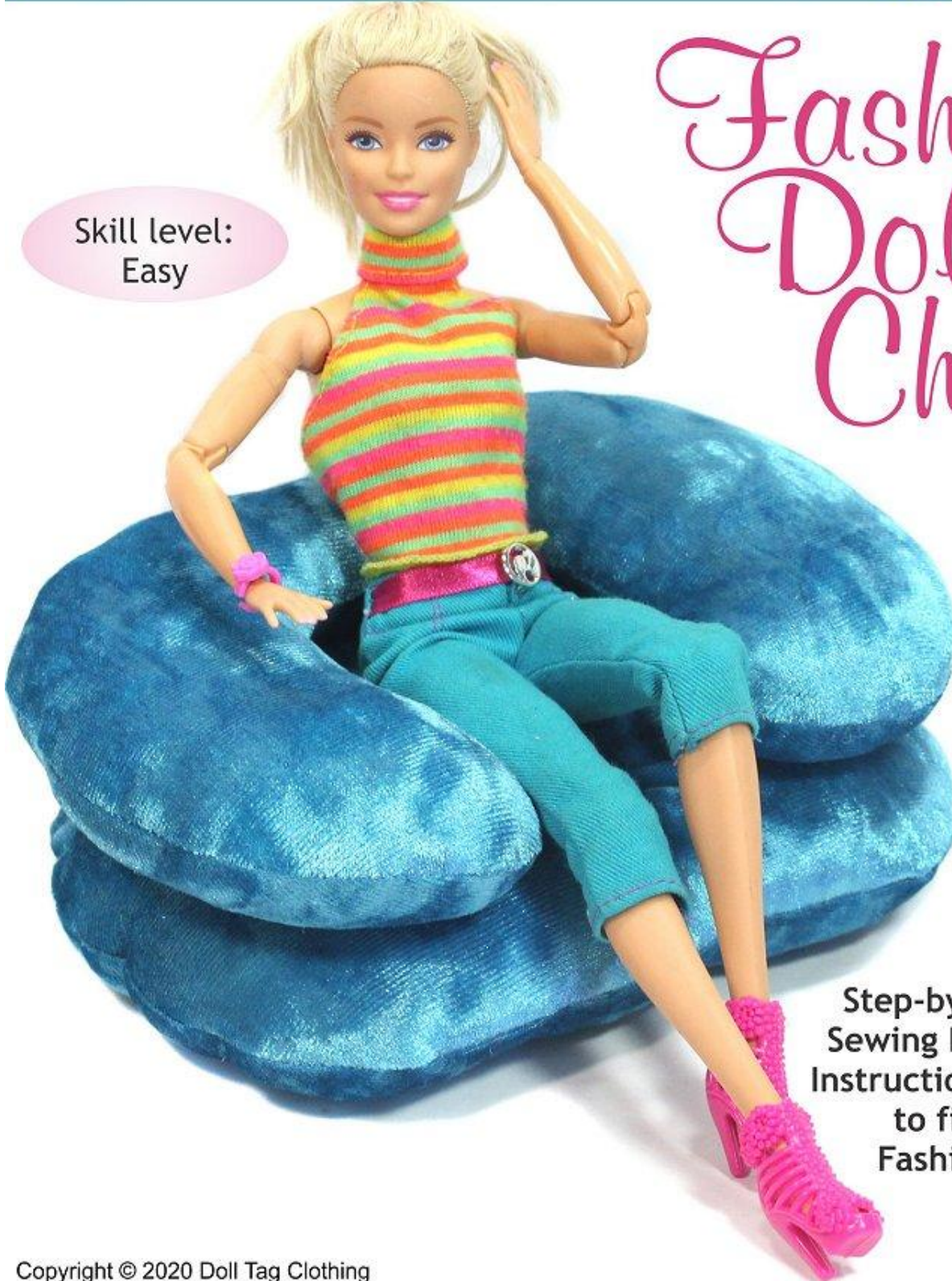


Doll Tag Clothing



Skill level:
Easy

Fashion Doll Chair



Step-by-Step PDF
Sewing Pattern and
Instructions Designed
to fit 11.5"
Fashion Dolls



INDEX

Cover Page	Page 1
Pattern Information	Page 2
Cutting Instructions	Page
Sewing Instructions	Page
Pattern Pieces	Page
Summary of Instructions	Page

About these Instructions

- Sew a chair for your 11.5” Fashion dolls.
- Quick sew project that is ideal for a beginner sewer.

Fabric and Product Guide

- Fabric Type — Woven — Quilt cotton, Medium weight Cotton, Flannel or Sheeting
— Fantasy Plush — Minky, Crushed Velvet, Fleece
- NOTE: For fabric with stretch like the Minky or Crushed Velvet you will need to iron on interfacing at the back.

Supply List

Fabric — 14.5” x 18”
Fusible Interfacing — 14.5” x 18”
3/8” Wide Button — x2
Long darning needle
Matching thread
Optional: Glue Gun

Print and preparing the pattern pieces

- Pattern pieces are found at end of instructions. They are designed to fit on an 8.5” x 11” standard US paper.
- Check the scale of your pattern. No resizing necessary. Print files at 100%, “Scale None”, or “Actual Size”.
- If you are using A4 Paper set and your scale is not correct, set your printer to print “Letter” size.
- Simply cut out the pattern pieces or trace them onto pattern paper.

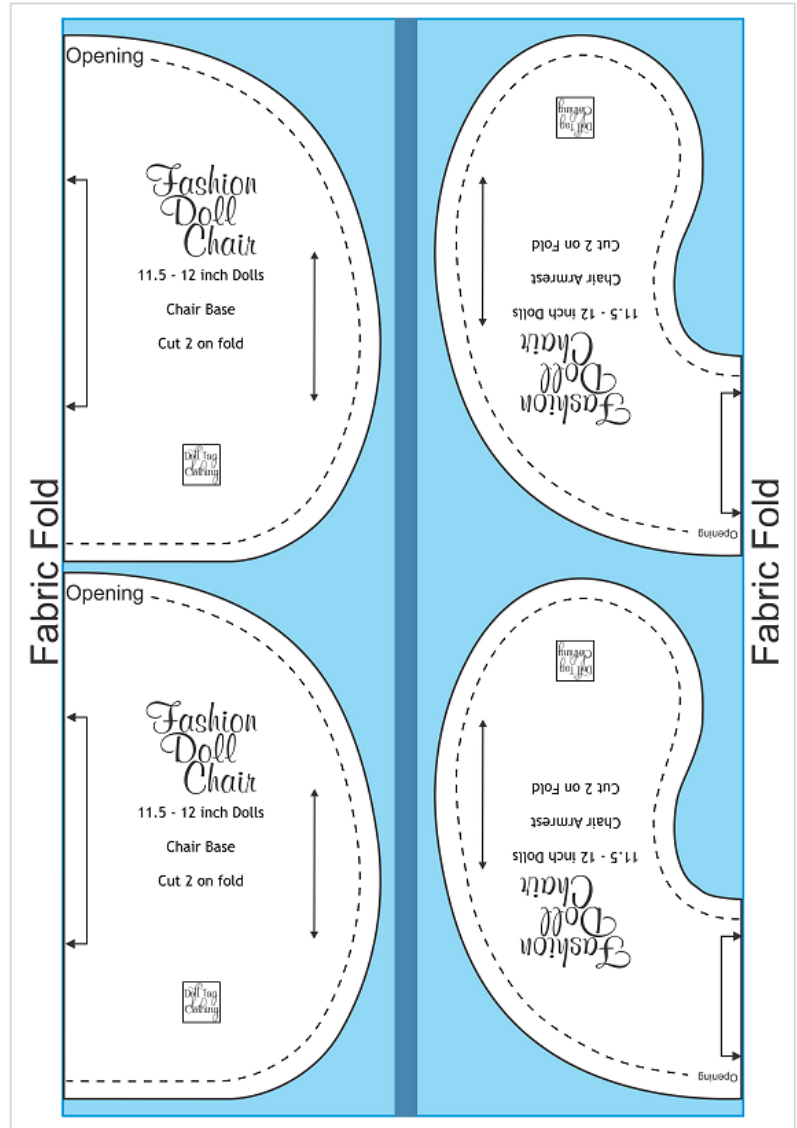
Cutting Instructions

Chair Base

2x Fabric on fold
2x Interfacing on fold

Chair Armrest

2x Fabric on fold
2x Interfacing on fold

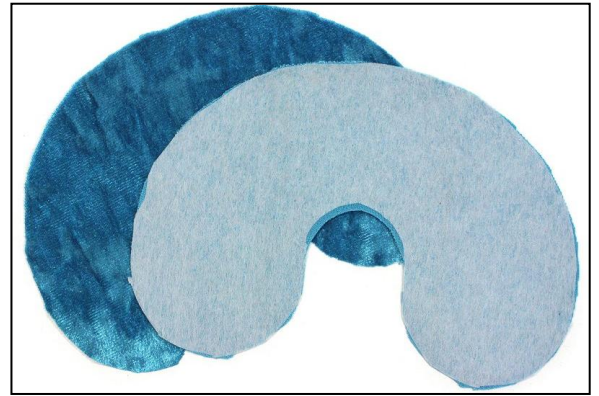


Before You Begin

- **Seam allowance** – Sew a 1/4" seam unless otherwise stated.
- **FLEECE** – Fleece fabric does not fray, so does not require you to zigzag or serge the seams.
- **"Finish off the seam"** – This is to prevent fraying. If you do not have a serger, then use an overlock or zigzag stitch on your machine. Fray check can also be used. A nice zigzag to use on your machine: Set stitch length 2 and stitch width 2.
- **"Finish off the seam" for 2 layers** – *Trim* the seam slightly and zigzag.
- **Pressing** – Fleece can be damaged by direct heat. Use a pressing sheet or paper to protect it when pressing.
- **CLIP and NOTCH the Curves** – Internal curves are clipped and external curves are notched at regular intervals. This allows for a flat curve when the seam is turned.

Sewing Instructions

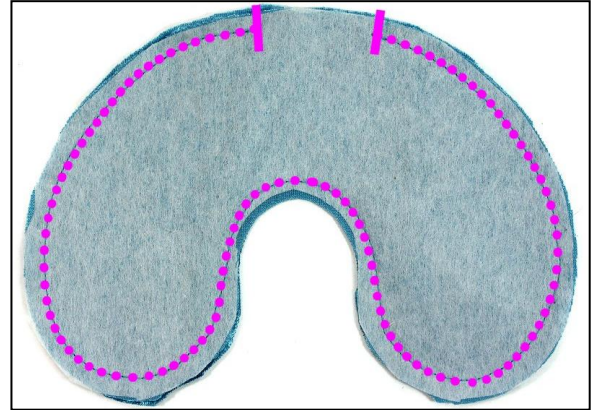
1. If you are using fabric with a stretch, you need to iron on fusible interfacing to the back of each of your four panels.



CHAIR ARMREST

2. With right sides together, place the two armrest panels together. Sew all the way around the edge leaving a gap of 1.5" at the back edge.

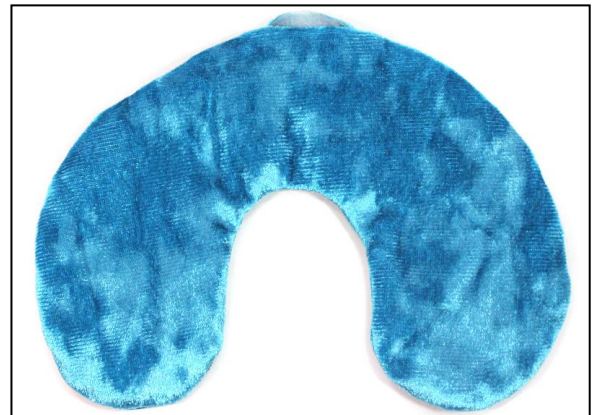
Be sure to secure your stitches at the beginning and end.



3. **CLIP the Curves** — Internal curves are clipped and external curves are notched at regular intervals. This allows for an even curve when the armrest is turned.



4. Turn the armrest right side out and push out the edges neatly.
5. Fill the armrest with stuffing.



6. Keep the edge of the opening folded to the inside, 1/4". Sew the opening closed by hand.



CHAIR BASE

7. With right sides together, place the two base panels together. Sew all the way around the edge leaving a gap of 1.5" at the back edge.

Be sure to secure your stitches at the beginning and end.

8. **NOTCH the Curves** – External curves are notched at regular intervals. This allows for an even curve when the base is turned.

9. Turn the base right side out and push out the edges neatly.

10. Fill the base with stuffing.

11. Keep the edge of the opening folded to the inside, 1/4". Sew the opening closed by hand.

12. Mark the center of the seating area of the base. Sew a button on the top of the base. **DO NOT cut the thread!!!** Now place a button on the underside of the base directly opposite the first button and thread the needle through the cushion. **Start sewing the second button in place BUT with the FIRST stitch pull it tighter creating a "dent" in the base.**

Continue to sew on the second button. Tie off the thread and cute.

13. Place the armrest onto the base and using a darning needle, sew the two together.

OPTIONAL: Use a glue gun to attach the armrest to the base.

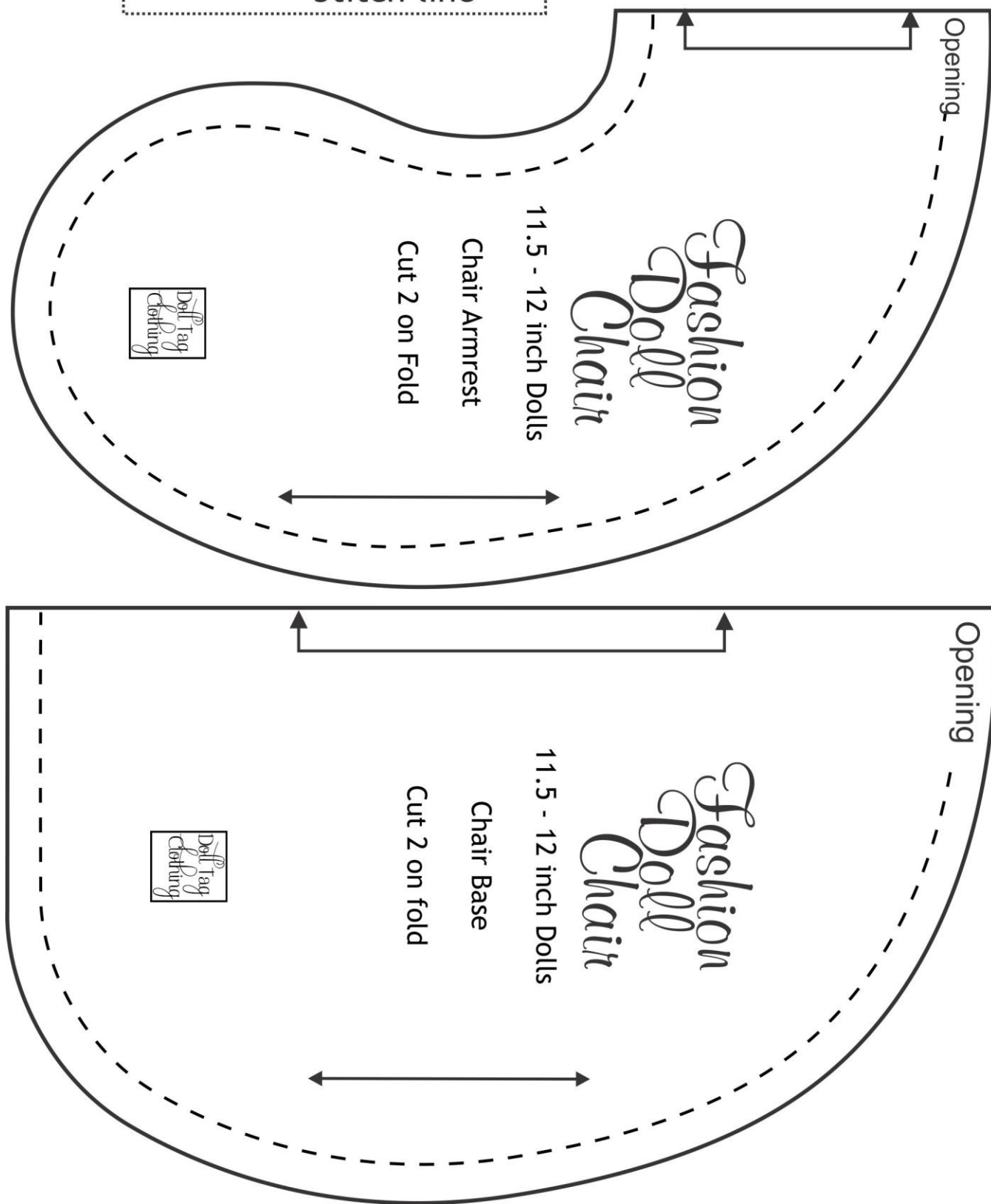
The chair is now complete!



Pattern Symbols

- ↔ Grainline
- ↕ Place on fold
- - - - - Stitch line

1 inch



SUMMARY OF INSTRUCTIONS

Fashion Doll Chair

.....

1. If you are using fabric with a stretch, you need to iron on fusible interfacing to the back of each of your four panels.

CHAIR ARMREST

2. With right sides together, place the two armrest panels together. Sew all the way around the edge leaving a gap of 1.5" at the back edge.
Be sure to secure your stitches at the beginning and end.
3. **CLIP the Curves** – Internal curves are clipped and external curves are notched at regular intervals. This allows for an even curve when the armrest is turned.
4. Turn the armrest right side out and push out the edges neatly.
5. Fill the armrest with stuffing.
6. Keep the edge of the opening folded to the inside, 1/4". Sew the opening closed by hand.

CHAIR BASE

7. With right sides together, place the two base panels together. Sew all the way around the edge leaving a gap of 1.5" at the back edge.
Be sure to secure your stitches at the beginning and end.
8. **NOTCH the Curves** – External curves are notched at regular intervals. This allows for an even curve when the base is turned.
9. Turn the base right side out and push out the edges neatly.
10. Fill the base with stuffing.
11. Keep the edge of the opening folded to the inside, 1/4". Sew the opening closed by hand.
12. Mark the center of the seating area of the base. Sew a button on the top of the base. **DO NOT cut the thread!!!**
Now place a button on the underside of the base directly opposite the first button and thread the needle through the cushion. **Start sewing the second button in place BUT with the FIRST stitch pull it tighter creating a "dent" in the base.**
Continue to sew on the second button. Tie off the thread and cut.
13. Place the armrest onto the base and using a darning needle, sew the two together.
OPTIONAL: Use a glue gun to attach the armrest to the base.

The chair is now complete!

OVER 150 PATTERNS IN MY CATALOGUE!



For more Free patterns, doll patterns and a Doll Tag Pattern checklist.

www.dolltagclothing.com

Welcome to my Doll World!



Dollplaysa.com
South African Girl Doll



Facebook.com/DollTagClothing



Dolltagclothing1@gmail.com



Instagram.com/dollplaysa/



Pinterest.com/Liese_Brouwer



Ravelry.com/designers/lieze-brouwer

About file sharing - You have purchased 1 copy of this digital product from Doll Tag Clothing for your personal use. You do not have permission to copy, share or sell this pattern or parts thereof. You do not have permission to give it to someone else in any form. Selling or giving this pattern away or parts thereof violates our copyright and is wrong.

Copyright © 2020 Doll Tag Clothing - All rights reserved

Disclaimer - These patterns are intended for personal use, not for large scale commercial purposes or manufacturing. When using this pattern to create an item for sale, it will be appreciated if you could give credit in your listing to Doll Tag Clothing.

Doll Tag Clothing is not affiliated with Mattel®, Barbie™ or Ken™ Dolls.
No endorsement is implied.